

Stress-free 3-Dimensional Software that sells more
Kitchens, Bedrooms and Bathrooms

VR **3D DESIGN SOFTWARE**
KITCHEN · BEDROOM · BATHROOM **NEXUS**

Introduction

You could sell more Kitchens, Bedrooms and Bathrooms when you create designs with VR 3D Design Software from Nexus. That's why, acting upon feedback from design professionals like yourselves, VR Software has designed a new generation of CAD software which creates a 3D kitchen, bedroom or bathroom model in minutes rather than hours.

VR now comes complete with the new **Texture Interface (Ti)**. This makes your designs even more realistic and profitable! With Ti you can import textured images of marble and other high quality worktops, tiles and door patterns into your designs and provide the customer with even greater realism and authenticity!

Other benefits of VR are that you can carry out all the designs and size calculations on screen, in full view of the customer and present the finished design, without embarrassing and unnecessary delays. Why give the customer time to 'cool off' or worse still, visit alternative showrooms when, with a little effort, you can present a sale-winning design in all its glory, right there and then.

This two-way participation helps make the customer feel as 'at home' with the plan as they will in the real thing! After all, home improvements are amongst the largest investments a householder will make and, as you well know, they won't take such an important decision lightly.

Consequently, VR Kitchen, VR Bathroom and VR Bedroom are very user-friendly programs, requiring little or no training and certainly no costly system support. The software is written to reflect your skills as a designer and you don't need expert computer knowledge to install and run it on your laptop or PC.

We know from research carried out in the USA that 80% of CAD users in the kitchen design business use 20% of the software capability. That's why VR products are not packed with the 'bells and whistles' that you will never use... so why pay for functions you do not need?

But please, don't take our word for it; **try VR free** and see for yourself the quality and simplicity of this superb design package!

- Extensive colour choices
- 3D drag-and-drop functionality makes bathroom design easy and more profitable
- Proven technology through on-going feedback from existing users
- Luxurious bathroom designs, quickly and easily



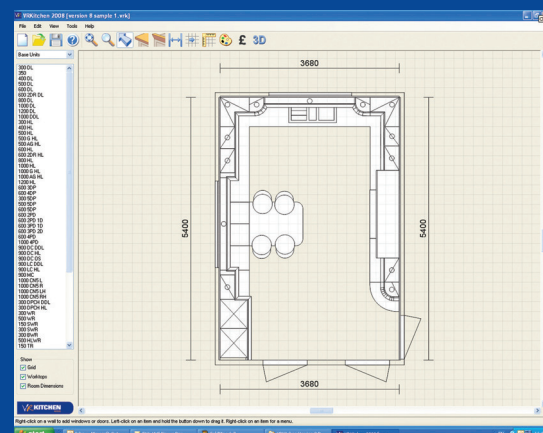
VR Kitchen is the flagship 3D design product from which all other VR products have been developed.

Using VR Kitchen you can create accurate representations of kitchen designs of all shapes and sizes and in contemporary or traditional styles.

This easy to use, drag-and-drop software lets you change facias, floors, worktops and wood grains, and then continue to reposition elements until the customer is totally happy with the design concept.

Walk-through view options allow the customer to see the kitchen from all angles, to be totally assured of the aesthetic and ergonomic qualities of the design you have created.

The increased design capability of VR Kitchen could help to make that all important sale more easily and quickly, having given the customer the peace of mind and reassurance that they are getting the very best kitchen that their money can buy.





VR Kitchen Overview:

- Integrates Texture Interface (Ti) for greater image realism
- Many different styles of units for maximum design options
- Customisable unit graphics
- Easy control of colours and other properties
- View from any angle and walk-through in real time
- Textures, shadows, reflections and image enhancement as standard
- Wide choice of door styles and finishes to choose from
- Powerful, affordable and easy to use CAD software

Costing Schedule:

Unlike many systems, VR Kitchen enables you to create any type of kitchen design within minutes, giving the customer the opportunity to develop the design with you, potentially making their purchasing decision easier. Every VR Kitchen design is created with the minimum number of actions, automatically producing an accurate costing schedule.

VR Costing Schedule					
Units: Price Group D					
Code	Description	Quantity	Price	Total	
300 MC	300 Mondo Corner	1	153.60	153.60	
500 2D BU	500 2 Door Broom Unit	1	146.40	146.40	
600 DO 2PD TU	600 Double Oven Tall Unit (2 Pan Drawers)	1	195.20	195.20	
600 DL	600 Drawer Line	1	75.20	75.20	
600 ZDP	600 3 Drawer Pack	1	89.60	89.60	
900 LC DDL	900 L-Shape Corner Dummy Drawer Line	2	157.60	315.20	
600 SIA	600 Sess Integrated Appliance	1	60.80	60.80	
300 ShR	300 Square Wine Rack	1	79.20	79.20	
300 HL	300 Hot Line	1	52.00	52.00	
1000 G HL	1000 Glossed Hot Line	1	102.40	102.40	
300 OEU R	300 Open End Unit Right	1	64.00	64.00	
150 PD	150 Pull Out Drawer	1	39.20	39.20	
600 CM 2PD MH	600 Coffee Maker Mid-Height (2 Pan Drawers)	1	156.80	156.80	
600 FIA	600 Fully Integrated Appliance	1	60.80	60.80	
150 TR	150 Towel Rack	1	39.20	39.20	
1000 DDL	1000 Dummy Drawer-Line	1	112.00	112.00	
600 PE	600 Pullout Hob Extractor	1	80.00	80.00	
500 TMB	500 Tambour Unit	1	108.80	108.80	
600 DC PH	600 Diagonal Corner Full-Height	3	100.00	300.00	
300 G PHF	300 Glass Full Height Framed	3	56.00	168.00	
500 DR 2D	500 Dresser (2 Drawers)	2	92.00	184.00	
500 PL	500 Plate Rack	1	76.80	76.80	
400 FH	400 Full Height	1	50.40	50.40	
600 ZDR FH	600 2 Door Full Height	1	74.40	74.40	
300 OE WU R	300 Open End Wall Unit Right	1	64.00	64.00	
500 DR 1D	500 Dresser (1 Drawer)	1	88.00	88.00	
		Units Total		2936.00	
4BH BOSCH	Bosch 4 Burner Hob	1	148.00	148.00	Remove
DEO BOSCH	Bosch Double Electric Oven	1	640.00	640.00	Remove
CN	Corice (2.4m length)	4	34.20	136.80	Remove
URS 1.5B	1.5 Bowl Universal Inset Sink	1	65.00	65.00	Remove
FC	Filing charge	1	500.00	500.00	Remove
			Sub Total	4435.80	
			VAT	776.27	
			Total	5212.07	
Total Corice Length = 0.00 m (guddies only)					
			OK	Cancel	Print

Total Corice Length = 0.00 m (guideline only)

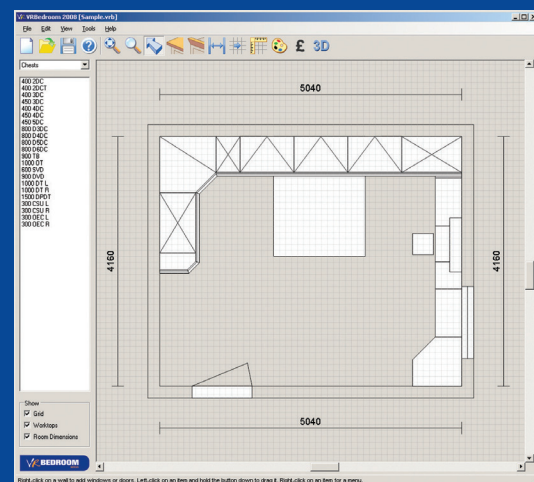
OK Cancel Print



VR Bedroom is an innovative and versatile bedroom design package developed specifically for interior designers.

Benefiting from ongoing user feedback obtained in the development of VR Kitchen, this latest bedroom software is the answer to every bedroom designer's dreams.

VR Bedroom is a dedicated 3D design package that is based on the same easy to use platform as its sister products and boasts some brand new design features specially created for the art of bedroom design.



VR Bedroom Overview:

- Creates warm and realistic bedroom impressions for customer impact
- Has VR's unique bedroom design capability
- Easy to use, drag-and-drop bedroom furniture
- Shows fitted furniture reproductions in various wood styles
- Features wooden, carpeted or tiled floor surfaces

VR 3D Design Software works! That's why a number of users have taken the time to write to us: Here's what they say:



"I have used the VR Kitchen, Bathroom and Bedrooms suite of software for around a year. The application is easy to use and intuitive and makes designing standard areas straightforward. The intelligent snapping and context rotation of objects makes for rapid development of ideas.

Once designed, you can easily render the design to 3D to visualise the design from any desired angle. This has been very useful in illustrating designs to my clients. As such results are easy to produce you do not need to invest hours of your time to produce an impressive result."

Deborah Drew Designs, from BBC DIY SOS.

"I am more than satisfied with both your systems and past help and advice. As mentioned in our early conversations, I am by far no expert in the use of computers, but was amazed at how easy and quickly I learned to use it. Once again, thanks for your help and guidance and I wish you every success."

Ian Appleyard, Quality Kitchens and Bathrooms, Yeadon.

"VR Kitchen is so simple to use – even for me!"

George Greatorex, Academy of Design, Flintshire.

System Specification for VR Software with Texture Interface (Ti)

Minimum Specification:

- 1GHz or better processor (AMD or Intel)
- 512MB RAM
- OpenGL compatible graphics card (nVidia GeForce recommended excluding GT 430 and GTS 450) with 16MB or more of video RAM
- 32-bit colour depth
- VR products each require approximately 450MB hard disk space

Recommended Specification:

- 2GHz or better processor (AMD or Intel)
- 1GB RAM or greater
- OpenGL compatible graphics card (nVidia GeForce recommended excluding GT 430 and GTS 450) with 512MB or more of video RAM
- 32-bit colour depth
- VR products each require approximately 450MB hard disk space

Operating System:

- Windows 2000 (requires Service Pack 3 or later)
- Windows XP (requires Service Pack 1 or later)
- Windows Vista
- Windows 7





Nexus Design Software Limited

Suite 9, Cherry Tree, Union Road
Sheffield S11 9EF

Tel: +44 (0) 114 250 8889

Fax: +44 (0) 114 250 7007

Email: sales@nexusdesignsoftware.com

www.nexusdesignsoftware.com